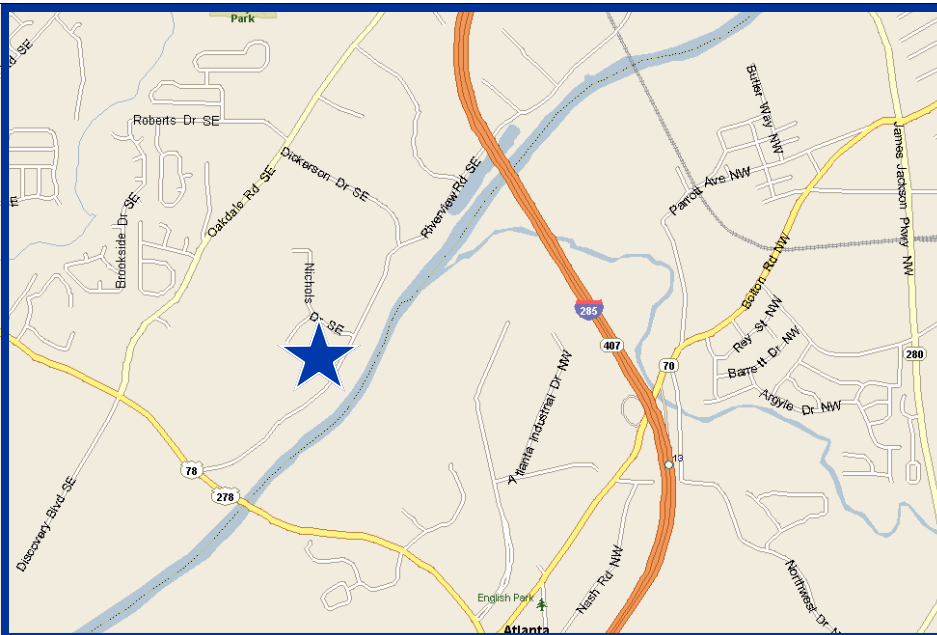


FOR LEASE

3.6± ACRES FENCED OUTSIDE STORAGE

1668 ARMSTRONG PLACE
MABLETON, GA 30126
COBB COUNTY



FEATURES:

- Zoned Heavy Industrial
- Fenced with gravel base
- 14' x 60' trailer with power and water
- Excellent site for trucking, equipment or container storage
- Excellent Access to I-285
- All Utilities Available

EXCLUSIVELY MARKETING BY:

John DeCouto, CCIM, MCR.h
404.442.2822
jdecouto@bryantcre.com



One Alliance Center
3500 Lenox Rd, NE, Suite 200
Atlanta, GA 30326
Phone: 404.442.2810
Fax: 404.442.2811
www.bryantcre.com

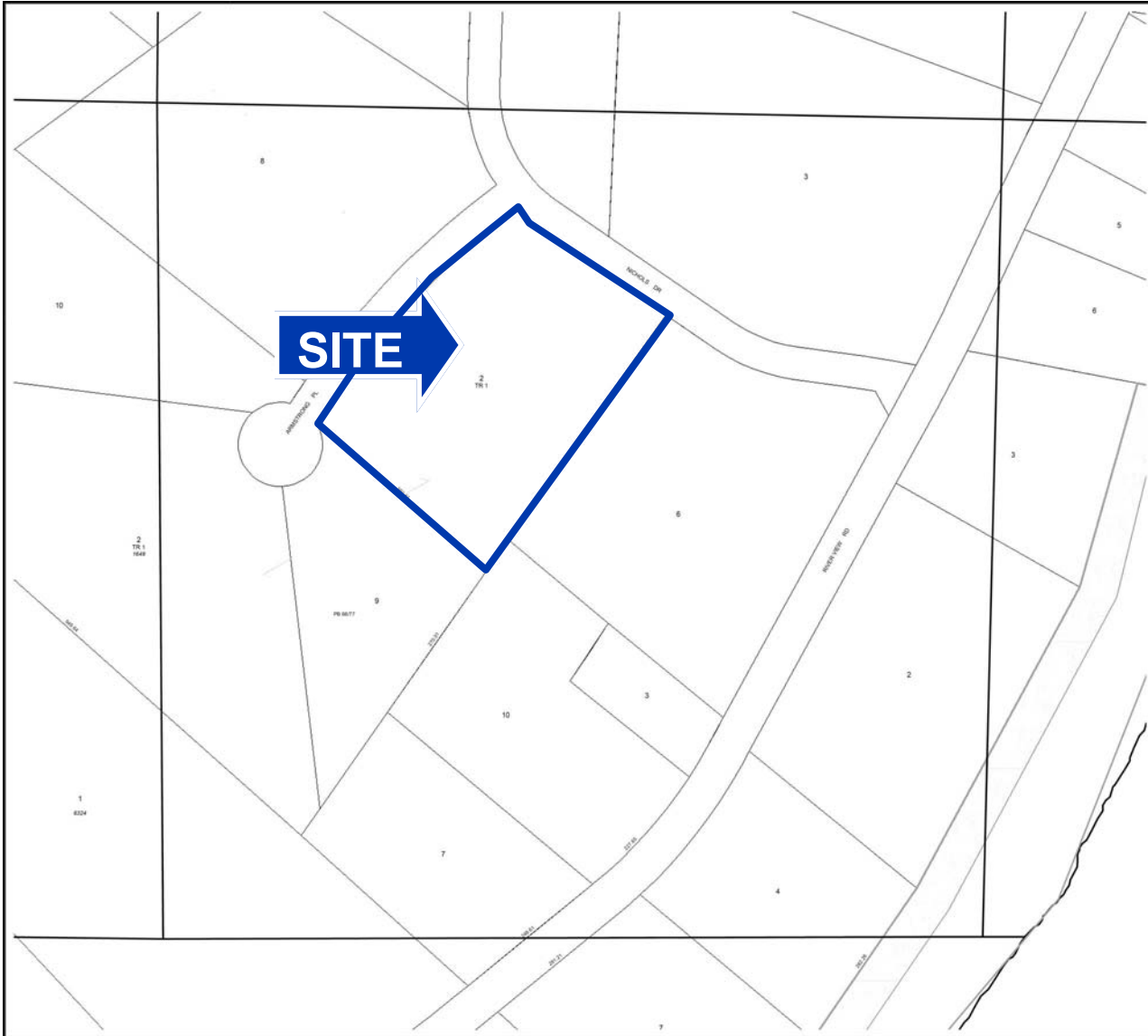
C O M M E R C I A L R E A L E S T A T E

Every effort has been made to obtain accurate information from the owner of the property and sources we believe to be reliable. However, we assume no liability for errors and omissions.

FOR LEASE

3.6± ACRES FENCED OUTSIDE STORAGE

1668 ARMSTRONG PLACE
MABLETON, GA 30126
COBB COUNTY



18-175

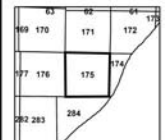
Legend

- Parcel
- Railroad ROW
- Trail ROW
- Water Region
- Land Lots
- Subdivision Boundary
- Cobb Boundary

Misc

- Land hooks
- Water Property line

18 Parcel
18 Lot Number
18 Street Address



Cobb County
Board of Tax Assessors
Mapping Division
728 Whittaker Ave. Ste 202
Marietta, Georgia 30064
770-582-3198

Jun 28, 2006

1 inch equals 100 feet



John DeCouto
404.442.2822
jdecouto@bryantcre.com

C O M M E R C I A L R E A L E S T A T E