

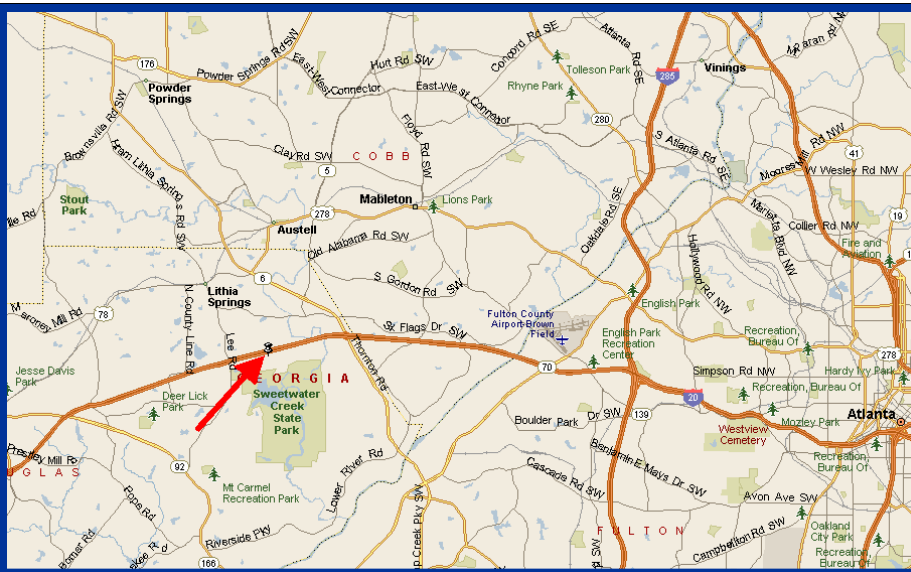
FOR SALE

6.94 ACRES

MT. VERNON RD. @
BLAIRS BRIDGE RD.
DOUGLASVILLE, GA

FEATURES:

- Zoned CG
(General Commercial)
- Great I-20 Location
- Between Lee Road and
Thornton Road Exits
- Adjacent to Columns at
Sweetwater Luxury
Apartments
- Near Sweetwater Creek
State Park
- 2004 Traffic Count:
11,440 Cars per day



One Alliance Center
3500 Lenox Road, Suite 200
Atlanta, GA 30326
Phone: 404.442.2810
Fax: 404.442.2811
www.bryantcre.com

EXCLUSIVELY MARKETING BY:

Bruce Davis
404.442.2817
bdavis@bryantcre.com

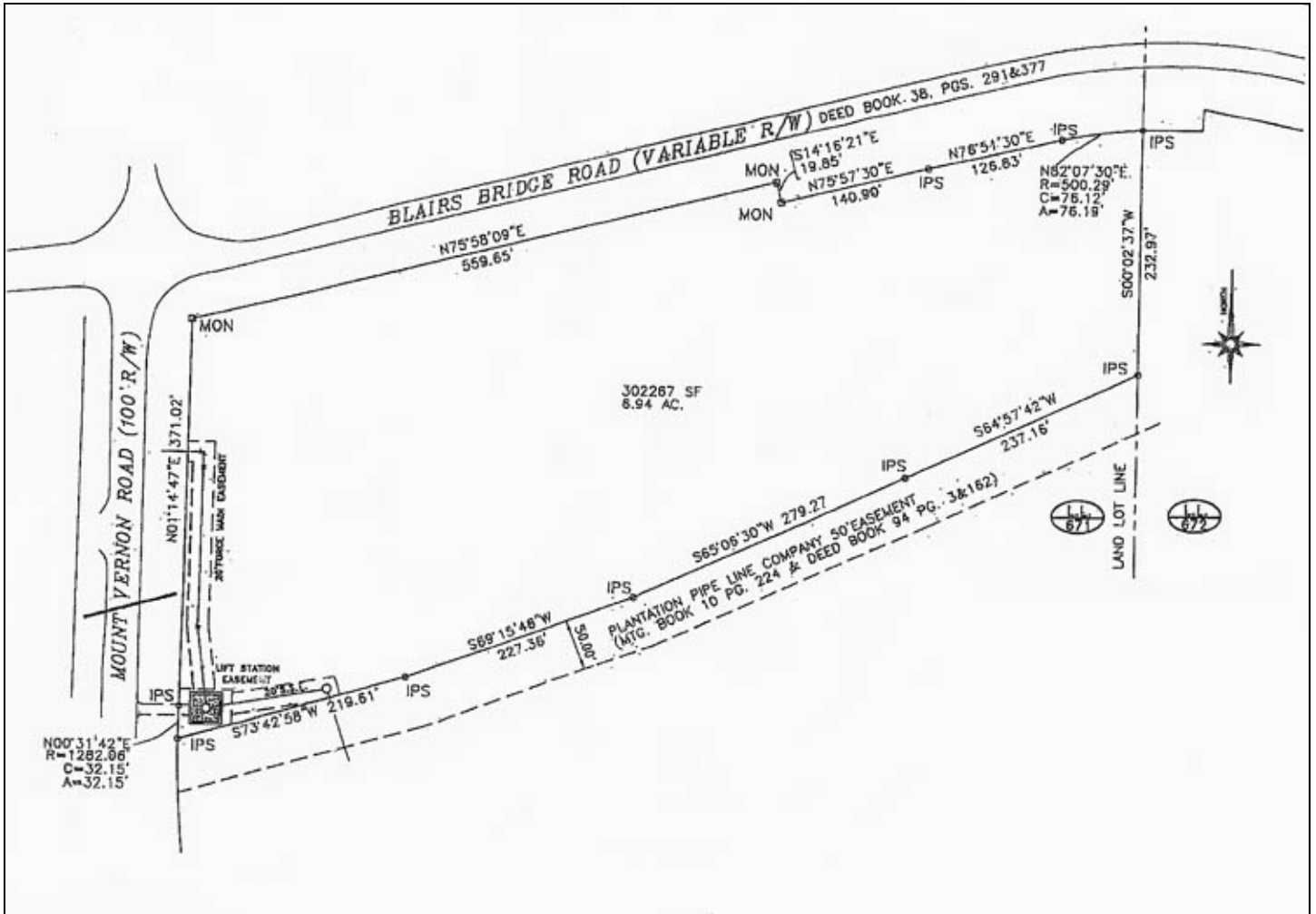
C O M M E R C I A L R E A L E S T A T E

Every effort has been made to obtain accurate information from the owner of the property and sources we believe to be reliable. However, we assume no liability for errors and omissions.

FOR SALE

6.94 ACRES

MT. VERNON RD. @
BLAIRS BRIDGE RD.
DOUGLASVILLE, GA



Bruce Davis
404.442.2817
bdavis@bryantcre.com

C O M M E R C I A L R E A L E S T A T E