

FOR SALE

**±102 ACRES FOR POTENTIAL INDUSTRIAL
RAIL SERVED SITE**

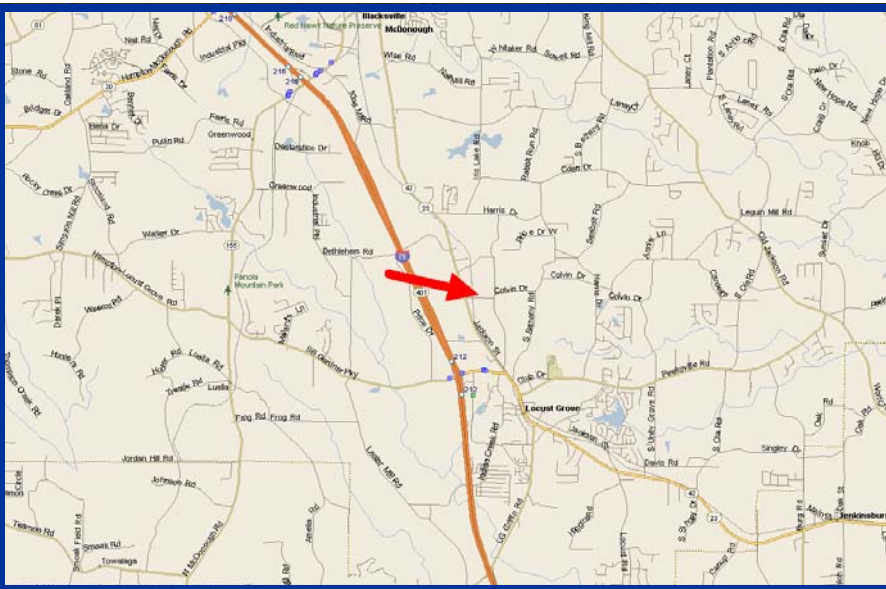
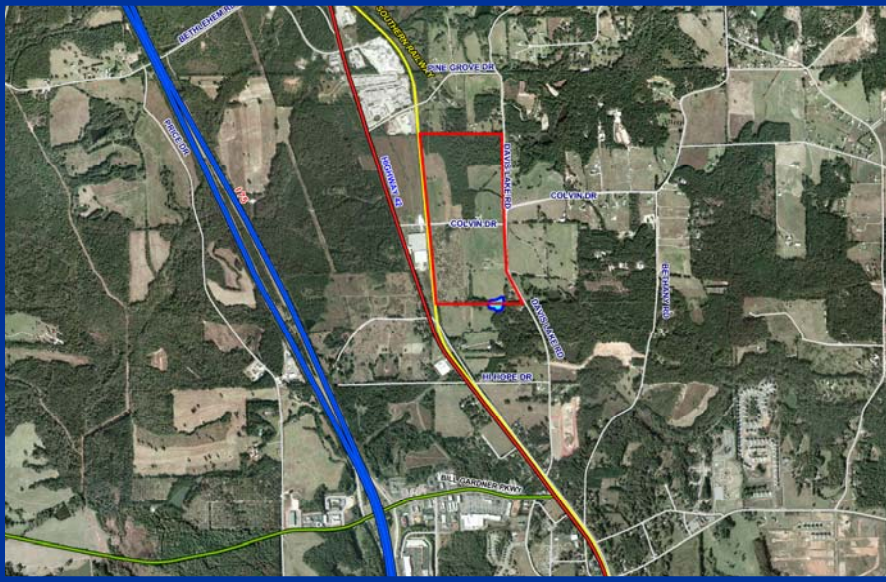
**HWY 42 & COLVIN DRIVE
LOCUST GROVE, GA 30248
HENRY COUNTY**

FEATURES:

- **±3,100 FT of Norfolk Southern Rail frontage**
- **25 miles from Hartsfield-Jackson International Airport**
- **210 miles from Savannah**
- **Less than 2 miles off Interstate 75**
- **Flat topography**
- **Sewer 1,500 feet away with all other utilities on site**
- **Approximate dimensions: 1,500 SF x 2,950 SF**
*Will subdivide

EXCLUSIVELY MARKETING BY:

Tom Bryant
404.442.2814
tbryant@bryantcre.com



One Alliance Center
3500 Lenox Road, Suite 200
Atlanta, GA 30326
Phone: 404.442.2810
Fax: 404.442.2811
www.bryantcre.com

C O M M E R C I A L R E A L E S T A T E

Every effort has been made to obtain accurate information from the owner of the property and sources we believe to be reliable. However, we assume no liability for errors and omissions.

FOR SALE

±102 ACRES FOR POTENTIAL INDUSTRIAL
RAIL SERVED SITE

HWY 42 & COLVIN DRIVE
LOCUST GROVE, GA 30248
HENRY COUNTY

