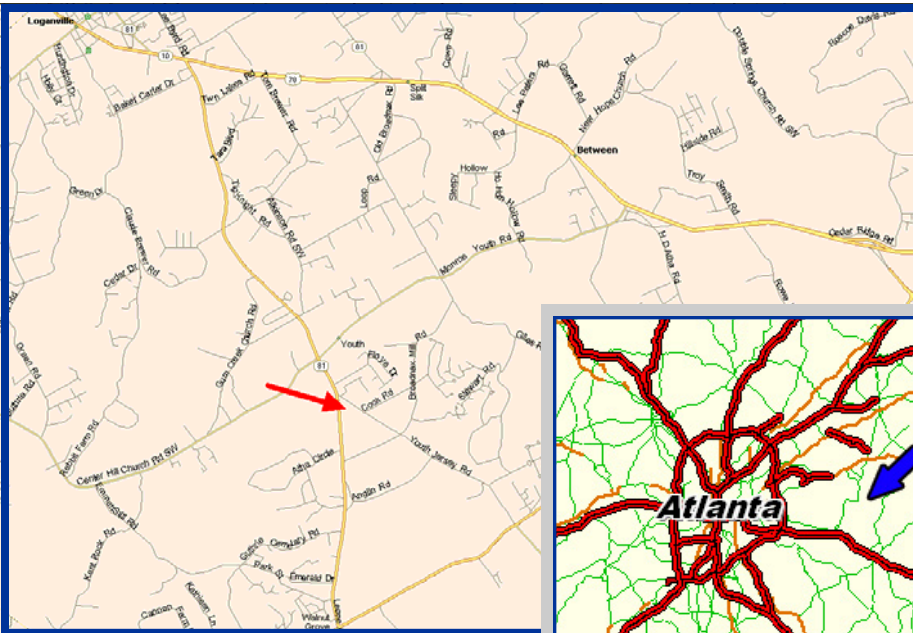


# FOR SALE

ASSEMBLAGE OF 10.27 ACRES

INTERSECTION OF HWY 81  
& YOUTH JERSEY RD  
LOGANVILLE, GA 30052  
WALTON COUNTY



## FEATURES:

- 3 contiguous tracts
- I-1, A-2 and R-1 zoning
- Frontage on both Highway 81 & Youth Jersey Road
- Ideal for retail development
- 3,890 cars per day - Youth Jersey Rd
- 10,330 cars per day - Hwy 81
- Please inquire for pricing
- Tax plat on following page

## EXCLUSIVELY MARKETING BY:

John R. Maddox, Jr.  
404.442.2826  
jmaddox@bryantcre.com

Kurt Unger, CCIM  
404.442.2823  
kunger@bryantcre.com



One Alliance Center  
3500 Lenox Road, Suite 200  
Atlanta, GA 30326  
Phone: 404.442.2810  
Fax: 404.442.2811  
[www.bryantcre.com](http://www.bryantcre.com)

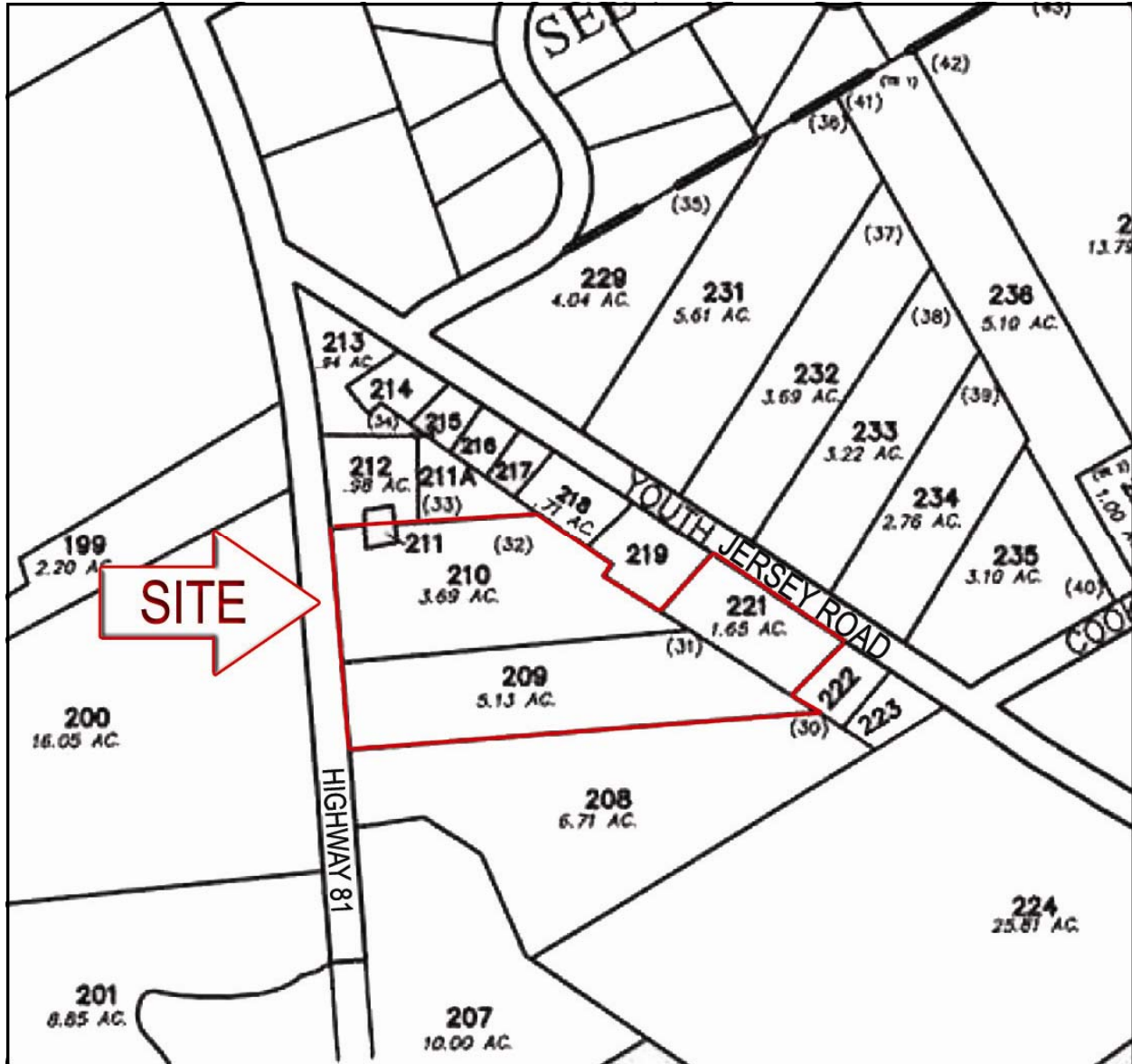
C O M M E R C I A L R E A L E S T A T E

Every effort has been made to obtain accurate information from the owner of the property and sources we believe to be reliable. However, we assume no liability for errors and omissions.

# FOR SALE

ASSEMBLAGE OF 10.27 ACRES

INTERSECTION OF HWY 81  
& YOUTH JERSEY RD  
LOGANVILLE, GA 30052



John R. Maddox, Jr.  
404.442.2826  
jmaddox@bryantcre.com

Kurt Unger, CCIM  
404.442.2823  
kunger@bryantcre.com

C O M M E R C I A L R E A L E S T A T E