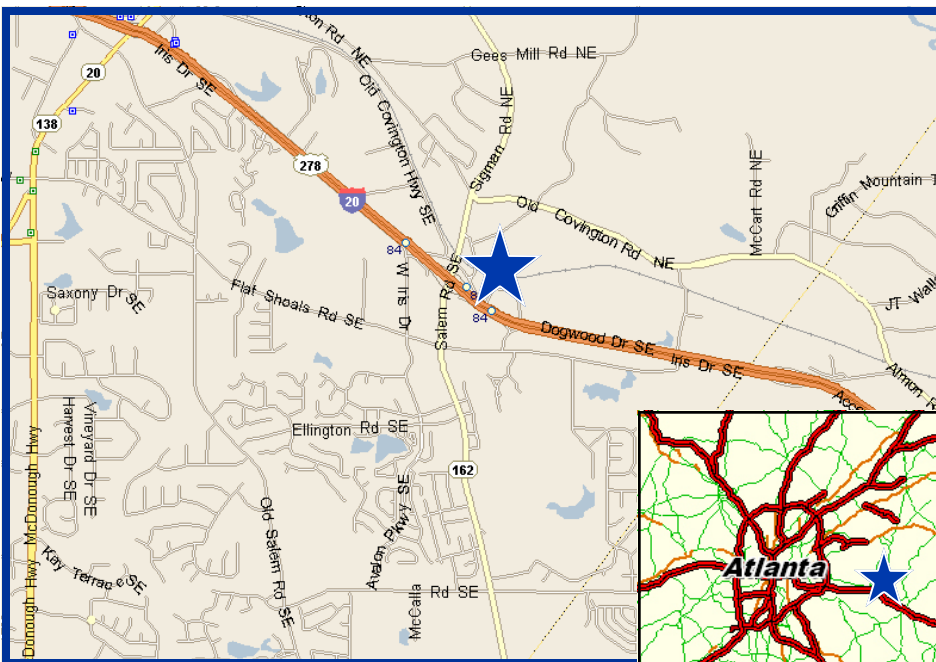


FOR SALE

+95.62 TOTAL ACRES AVAILABLE



I-20 EAST & SALEM RD
CONYERS, GA
ROCKDALE COUNTY

FEATURES:

- +95.62 total acres
- 2,160' rail frontage along GA railroad (CSX)
- Zoned M-1
- 1,942' road frontage along I-20 with excellent visibility
- Situated off I-20 approx. 1/2 mile southwest of Salem Rd exit
- +17 miles from I-285
- 26 miles from Downtown Atlanta
- 35 miles from Atlanta Airport
- Excellent access and visibility
- 4 billboards on site generating \$30,000+/yr
- 69,000 cars per day

EXCLUSIVELY MARKETING BY:

Kurt Unger, CCIM, SIOR
404.442.2823
kunger@bryantcre.com

Tara Healy
thealy@bryantcre.com
404.442.2872



One Alliance Center
3500 Lenox Rd, NE, Suite 200
Atlanta, GA 30326
Phone: 404.442.2810
Fax: 404.442.2811
www.bryantcre.com



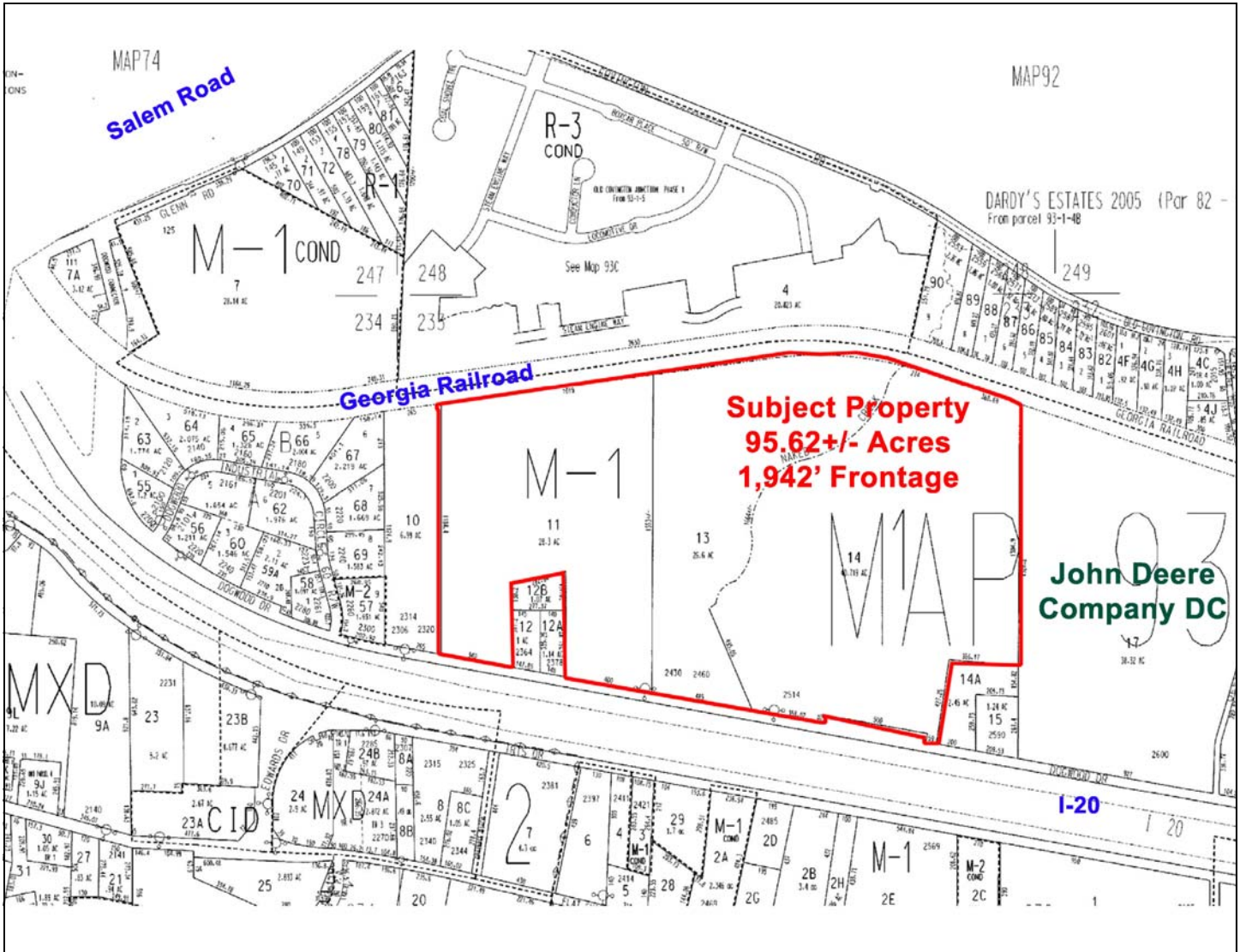
C O M M E R C I A L R E A L E S T A T E

Every effort has been made to obtain accurate information from the owner of the property and sources we believe to be reliable. However, we assume no liability for errors and omissions.

FOR SALE

±95.62 TOTAL ACRES AVAILABLE

I-20 EAST & SALEM RD
CONYERS, GA
ROCKDALE COUNTY



Kurt Unger, CCIM, SIOR
404.442.2823
kunger@bryantcre.com

Tara Healy
404.442.2872
thealy@bryantcre.com