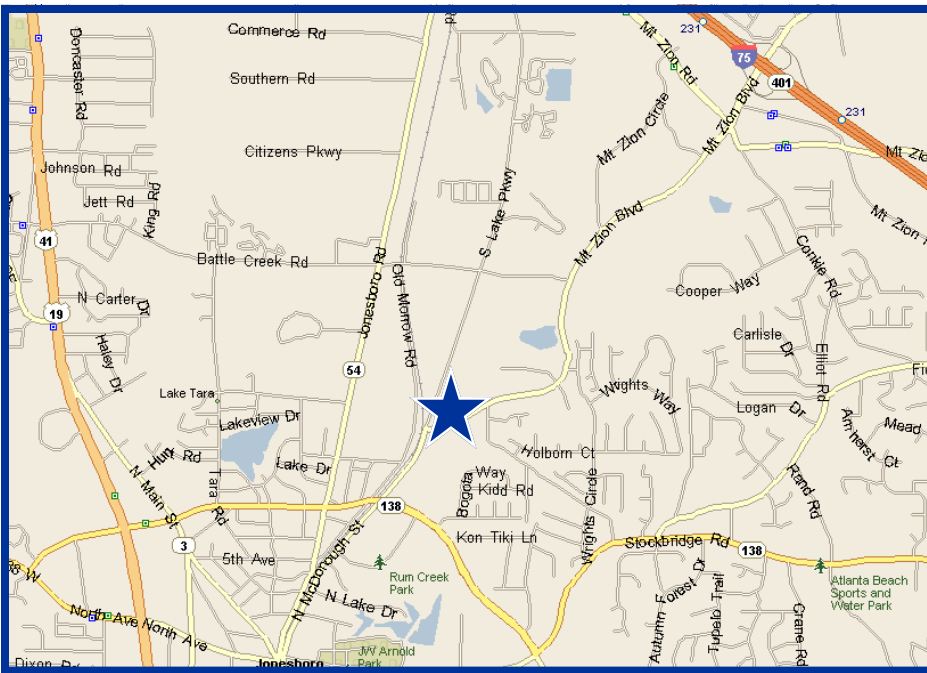


# FOR SALE

+3 ACRES

SOUTHLAKE PKWY &  
MOUNT ZION BLVD  
JONESBORO, GA 30236



## FEATURES

- Retail Potential
- Zoned Heavy Industrial
- Rough Graded
- Growing Industrial Corridor
- All utilities on site
- 2006 Traffic Count on Mount Zion Blvd: 9,000 cars daily
- 3 mile 2006 Demographics:
  - 65,510 population
  - \$50,218 median income
- Permitted Uses under current zoning (HI):
  - Service Station
  - Body Shop
  - Dry Cleaning
  - Appliance Sales & Repairs
  - Wholesale Warehousing & Distribution
  - Trucking Facility
  - Rock, Sand, & Gravel Storage & Distribution
  - and more...

## EXCLUSIVELY MARKETED BY:

Rick Tumlin, CCIM, SIOR  
404.442.2816  
rtumlin@bryantcre.com

Tom Bryant  
404.442.2814  
tbryant@bryantcre.com



One Alliance Center  
3500 Lenox Road, Suite 200  
Atlanta, GA 30326  
Phone: 404.442.2810  
Fax: 404.442.2811  
[www.bryantcre.com](http://www.bryantcre.com)



Individual Membership



Individual Membership

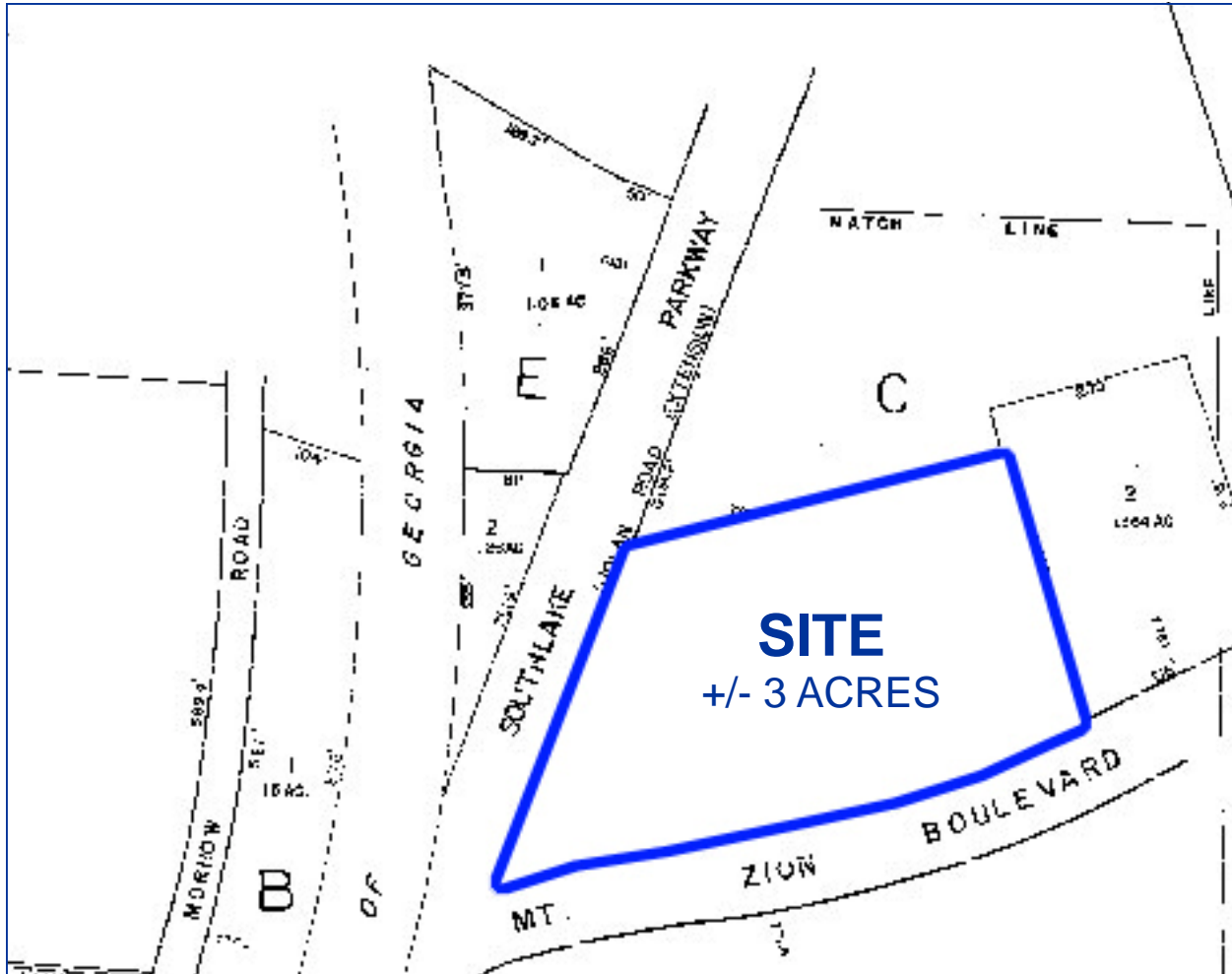
C O M M E R C I A L R E A L E S T A T E

Every effort has been made to obtain accurate information from the owner of the property and sources we believe to be reliable. However, we assume no liability for errors and omissions.

# FOR SALE

+3 ACRES

SOUTHLAKE PKWY &  
MOUNT ZION BLVD  
JONESBORO, GA 30236



Tom Bryant  
404.442.2814  
tbryant@bryantcre.com

Rick Tumlin, CCIM, SIOR  
404.442.2816  
rtumlin@bryantcre.com

C O M M E R C I A L R E A L E S T A T E